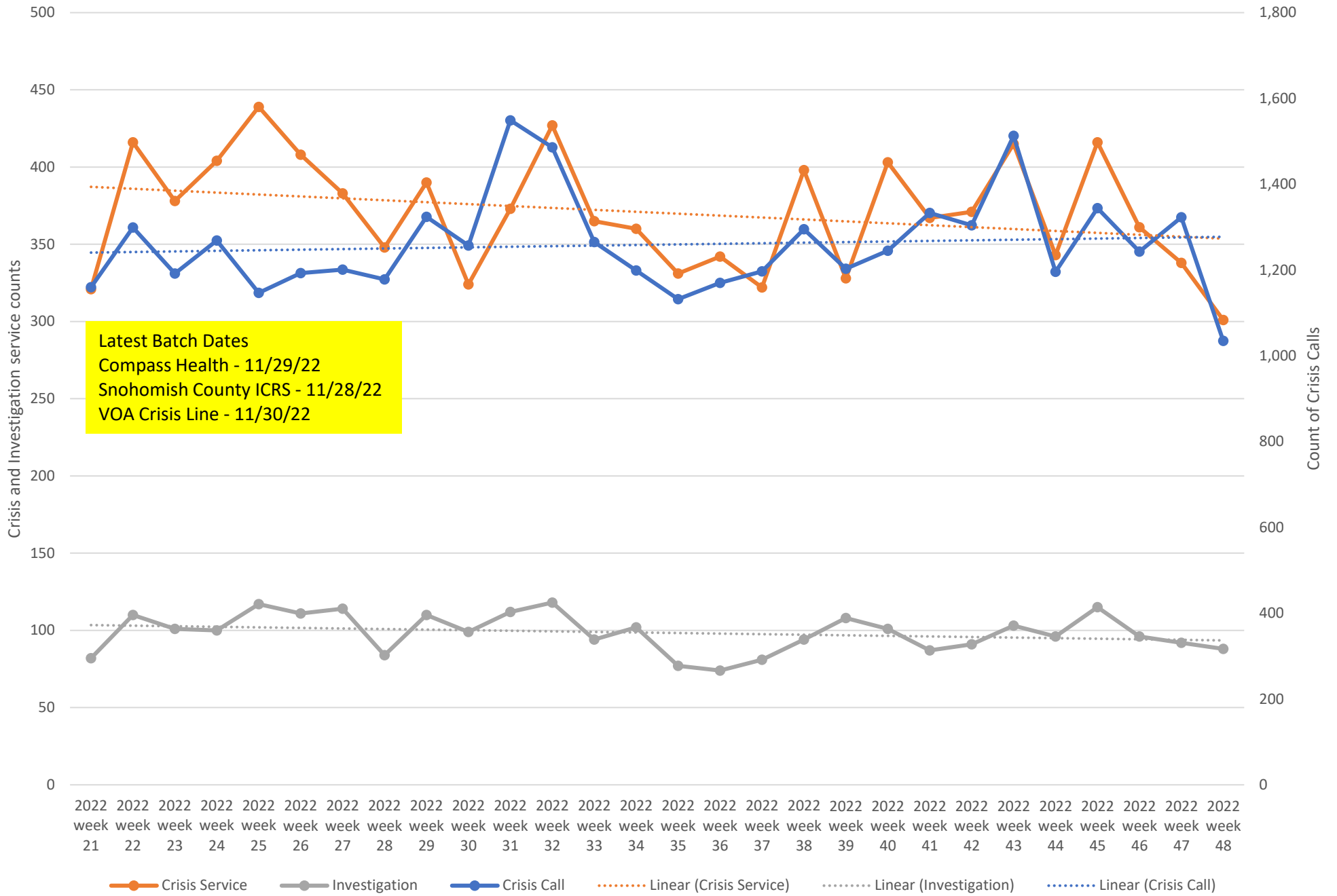




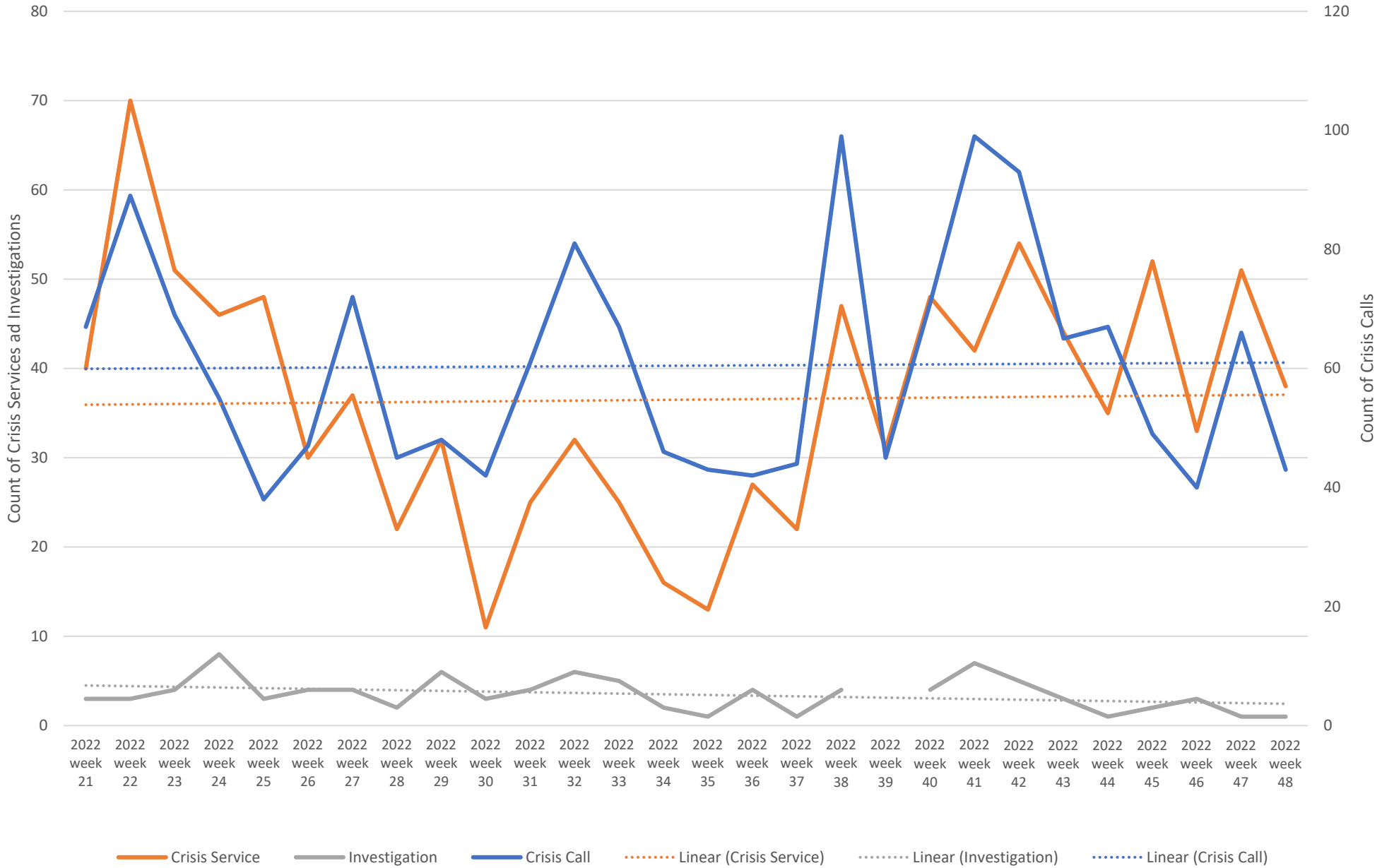
## Weekly Crisis Capacity Indicator Snapshot

Page 2	Crisis Data - dates 05/15/22 to 11/26/22
Page 3	Crisis Data: Ages 0-17 - dates 05/15/22 to 11/26/22
Page 4	All DCR Dispatches - dates 05/15/22 to 11/26/22
Page 5	Weekly Staff Count - Staff providing Crisis or Investigation services 05/15/22 to 11/26/22
Page 6	Hospital placement locations (Invol and Vol) - No adjustment has been made for timely data - recent weeks likely low
Page 7	Telehealth only, crisis and investigation services from 05/15/22 to 11/26/22
Page 8	Crisis Service Unit Percent - Crisis Service units divided by Crisis units + Investigation units
Page 9	Washington State Indicators of Anxiety or Depression Based on Reported Frequency of Symptoms During Last 7 Days
Page 10	Place of Service -Crisis Services, percent of total by week
Page 11	Place of Service -Investigations, percent of total by week
Page 12	New COVID-19 Cases Reported Weekly per 100,000 population - 09/01/21 to 11/30/22
Page 13	Total Hospitalized Adults - COVID-19 (confirmed or suspected) 7 day average
Page 14	North Sound BH ASO Walkaway Chart 05/15/22 to 11/26/22

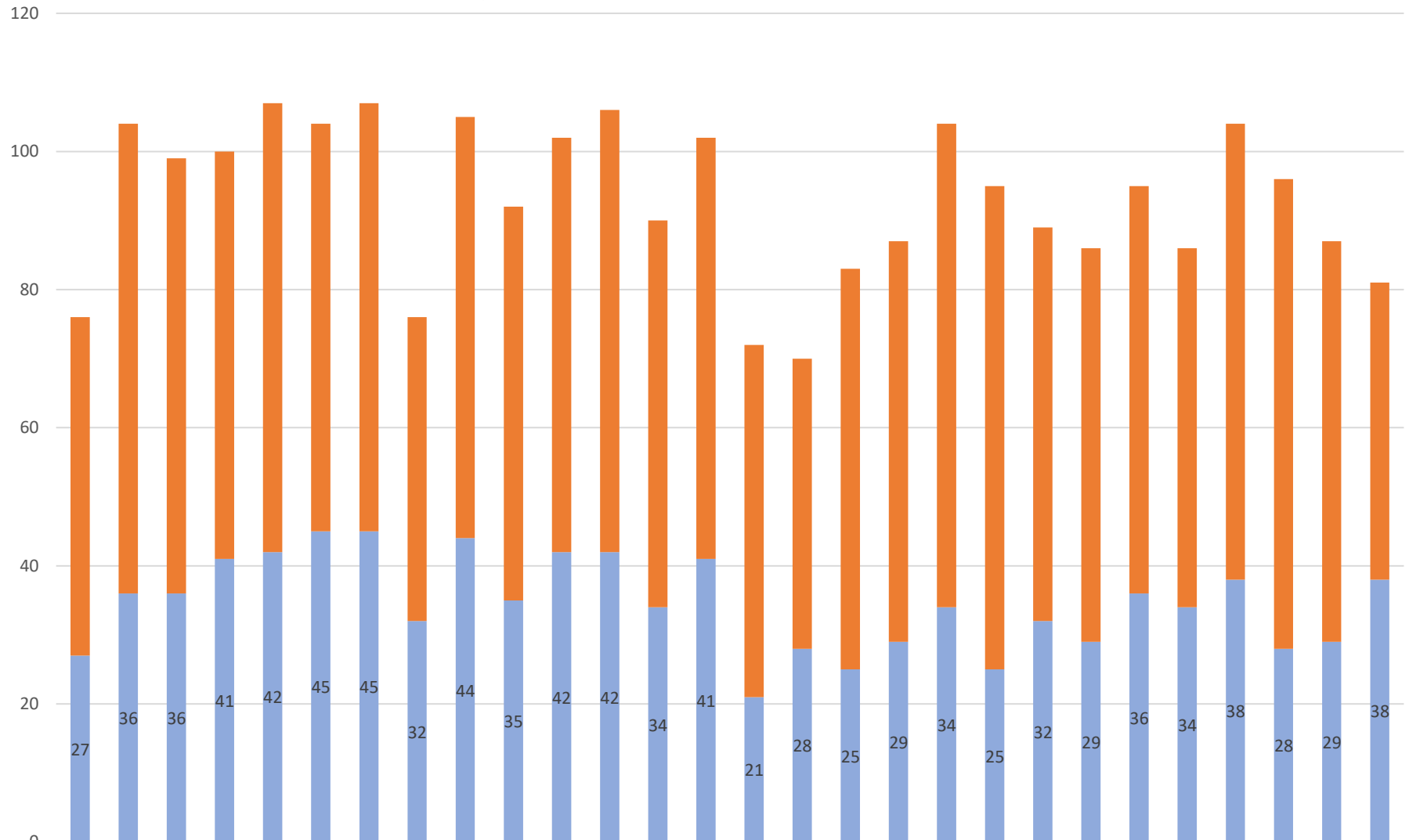
### Crisis Data - dates 05/15/22 to 11/26/22



Crisis Data: Ages 0-17 - dates 05/15/22 to 11/26/22

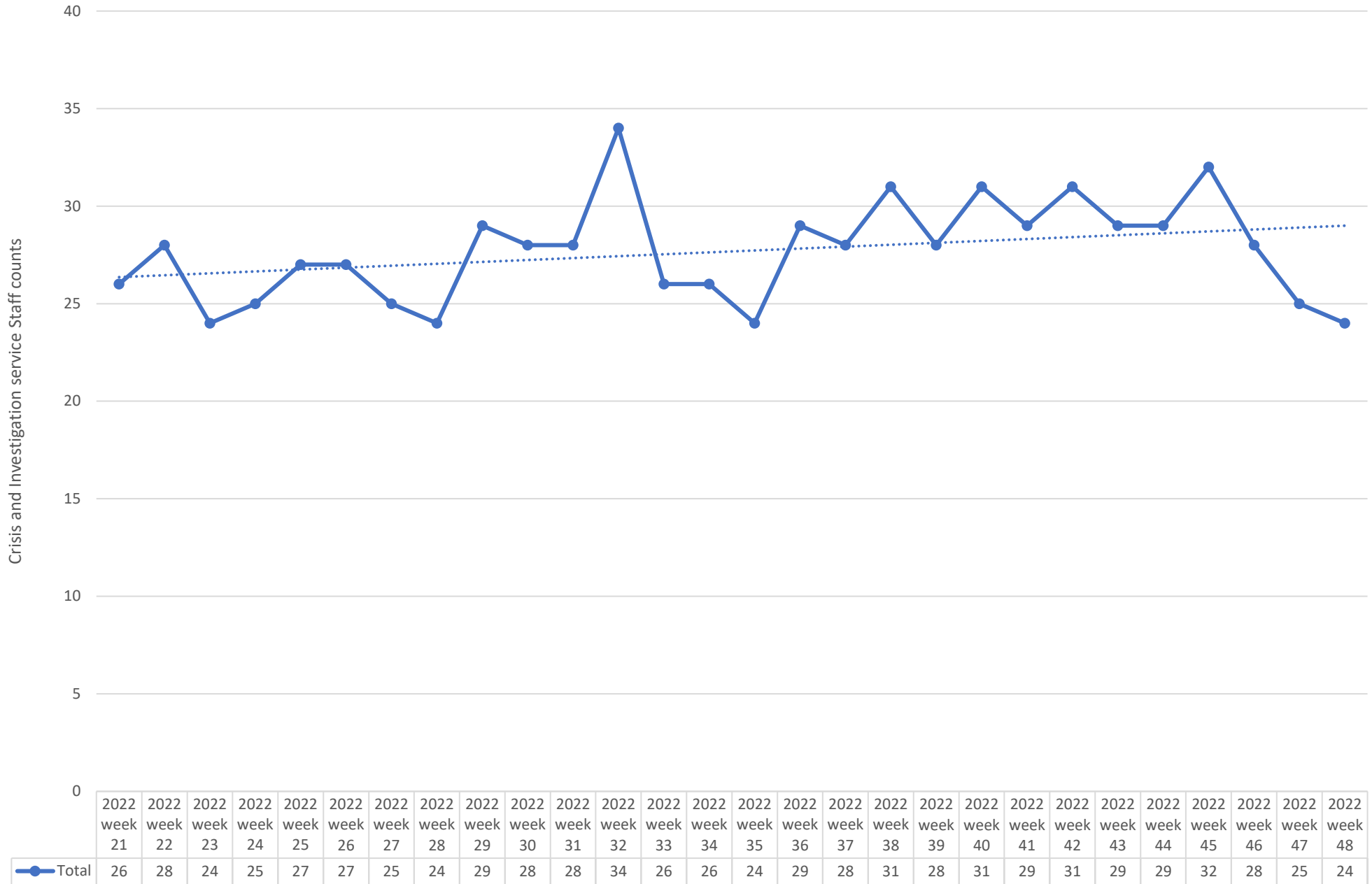


### All DCR Dispatches - dates 05/15/22 to 11/26/22



dispatch resulting in other outcome	49	68	63	59	65	59	62	44	61	57	60	64	56	61	51	42	58	58	70	70	57	57	59	52	66	68	58	43
dispatch resulting in detention	27	36	36	41	42	45	45	32	44	35	42	42	34	41	21	28	25	29	34	25	32	29	36	34	38	28	29	38

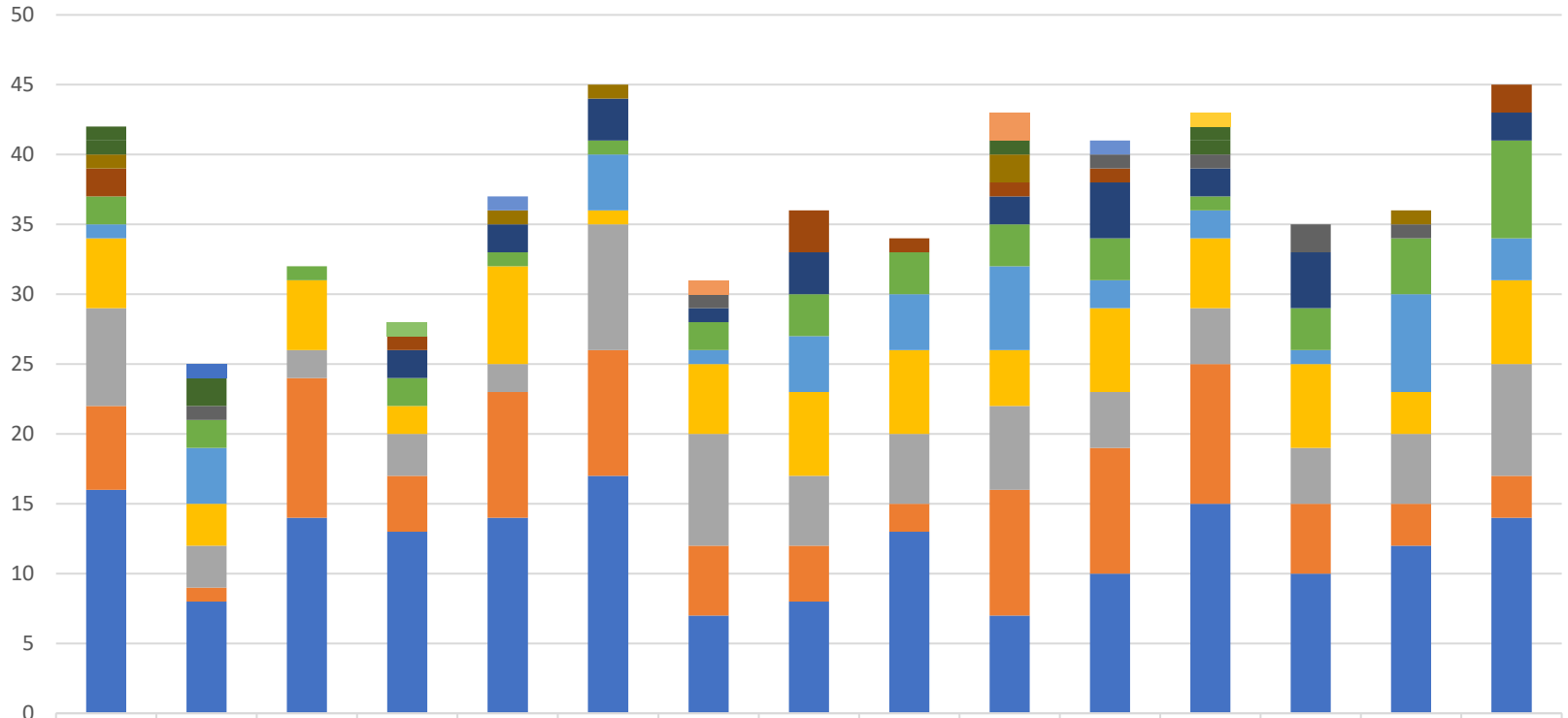
### Weekly Staff Count - Staff providing Crisis or Investigation services 05/15/22 to 11/26/22



2022 week 48 ending 01/00/00

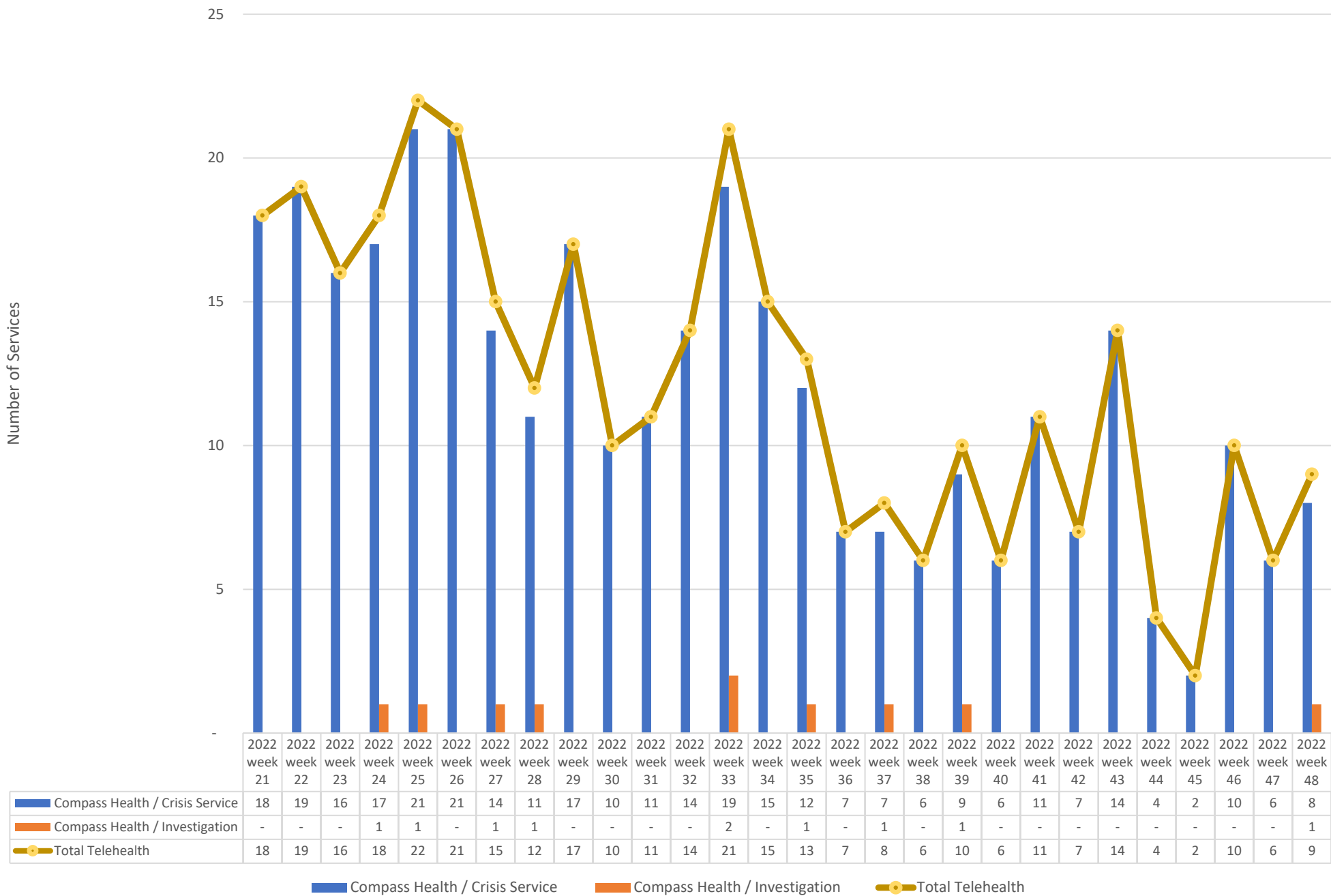
## Hospital placement locations (Invol and Vol) - No adjustment has been made for timely data - recent weeks likely low

Count of hospital placement locations in the dispatch record

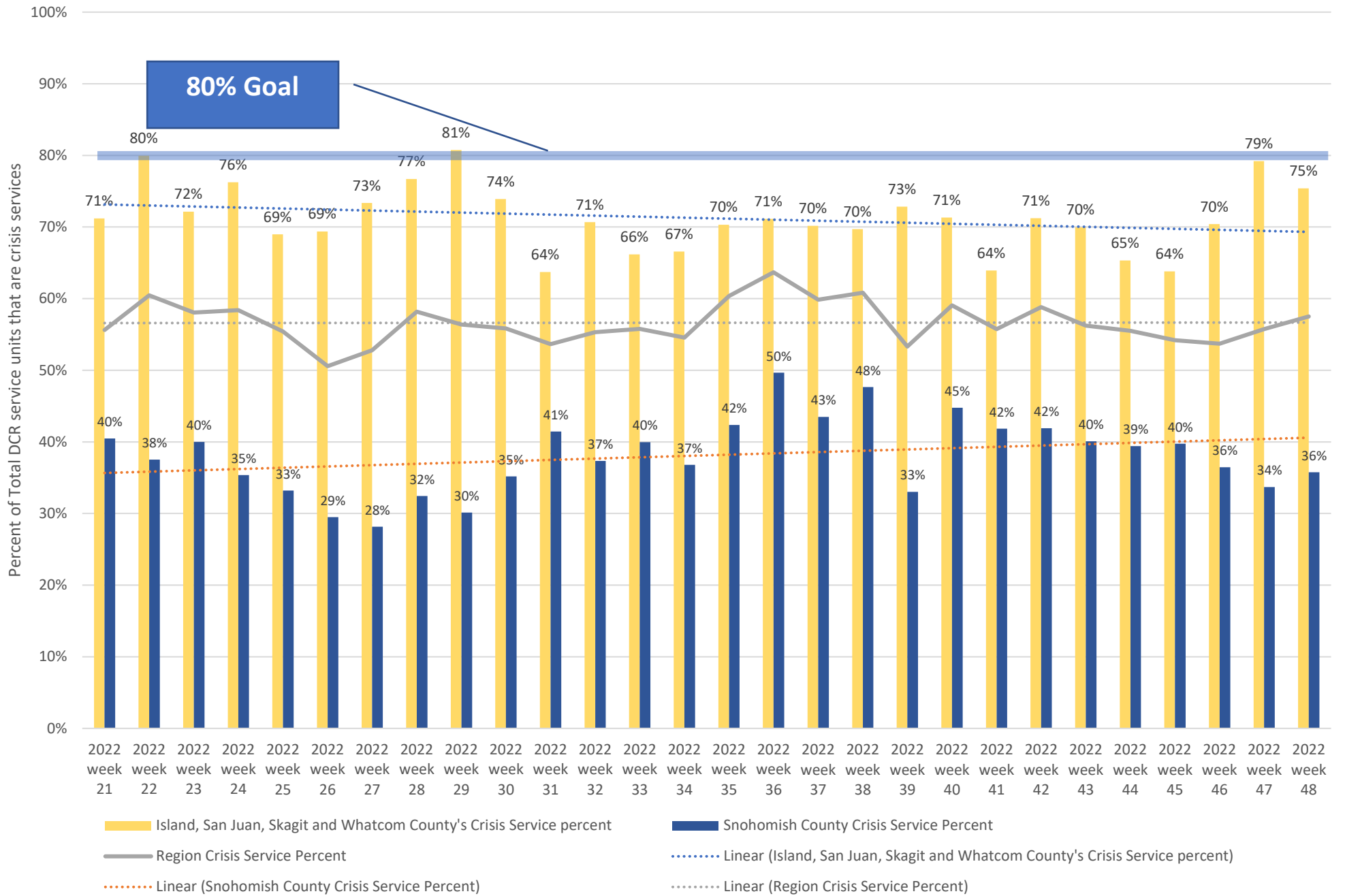


	2022 week 34	2022 week 35	2022 week 36	2022 week 37	2022 week 38	2022 week 39	2022 week 40	2022 week 41	2022 week 42	2022 week 43	2022 week 44	2022 week 45	2022 week 46	2022 week 47	2022 week 48
Cascade Behavioral Hospital LLC				1											
SWEDISH MEDICAL CENTER CHERRY HILL							1								
South Sound Vest Thurston												1			
Multicare Behavioral Health Inpatient Services - Auburn		1													
Western State										2					
Tacoma General					1						1				
THURSTON/MASON EandT FACILITY	1											1			
Swedish Mill Creek	1	2								1		1			
VALLEY GENERAL HOSPITAL	1				1	1				2				1	
ABHS Chehalis		1					1				1	1	2	1	
Telecare North Sound Evaluation and Treatment	2			1				3	1	1	1				2
Mukilteo				2	2	3	1	3		2	4	2	4		2
SMOKEY POINT BEHAVIORAL HOSPITAL	2	2	1	2	1	1	2	3	3	3	3	1	3	4	7
BHC Fairfax Hospital INC	1	4				4	1	4	4	6	2	2	1	7	3
Skagit Valley Hospital	5	3	5	2	7	1	5	6	6	4	6	5	6	3	6
SWEDISH EDMONDS	7	3	2	3	2	9	8	5	5	6	4	4	4	5	8
Peacehealth Bellingham	6	1	10	4	9	9	5	4	2	9	9	10	5	3	3
Providence Everett	16	8	14	13	14	17	7	8	13	7	10	15	10	12	14

Telehealth only, crisis and investigation services from 05/15/22 to 11/26/22



# Crisis Service Unit Percent - Crisis Service units divided by Crisis units + Investigation units

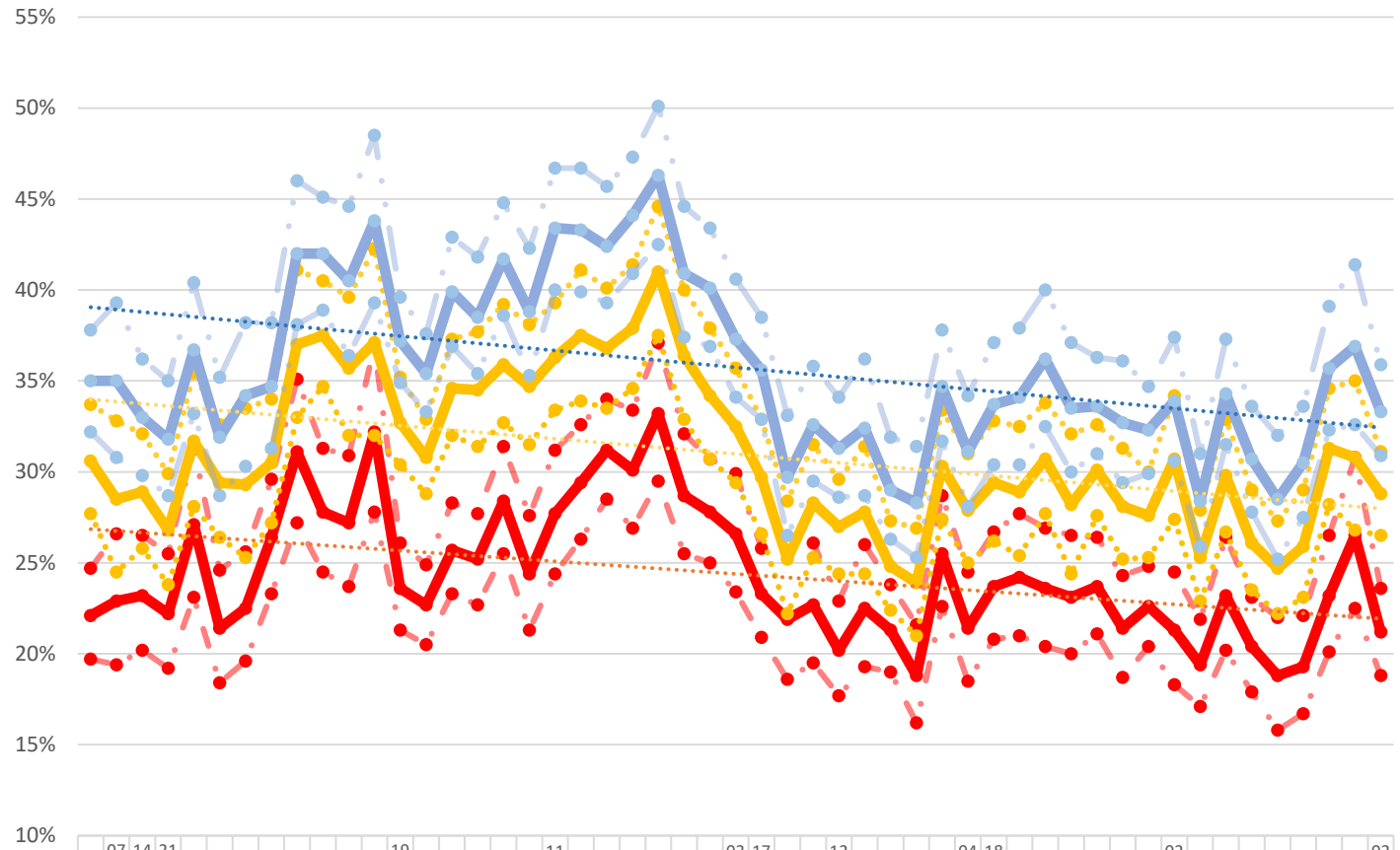




# Washington State Indicators of Anxiety or Depression Based on Reported Frequency of Symptoms During Last 7 Days

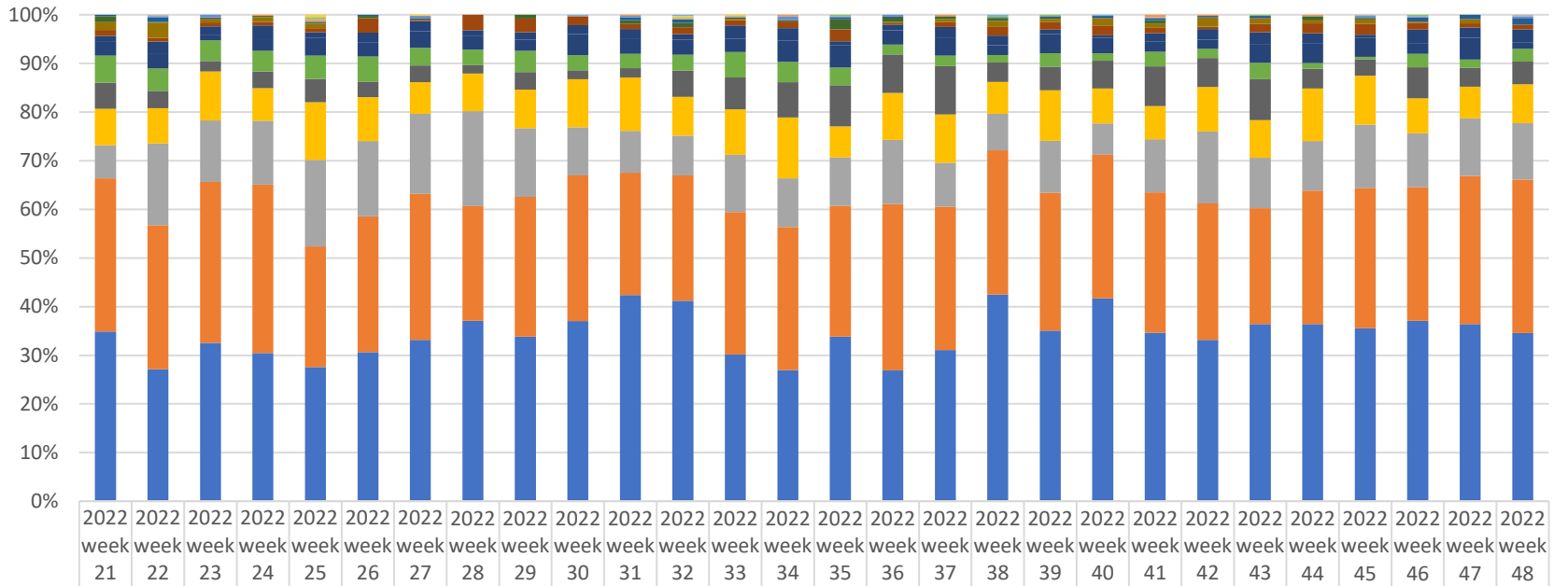
The U.S. Census Bureau, in collaboration with five federal agencies, launched the Household Pulse Survey to produce data on the social and economic impacts of Covid-19 on American households. The Household Pulse Survey was designed to gauge the impact of the pandemic on employment status, consumer spending, food security, housing, education disruptions, and dimensions of physical and mental wellness.

<https://data.cdc.gov/NCHS/Indicators-of-Anxiety-or-Depression-Based-on-Repor/8pt5-q6wp>



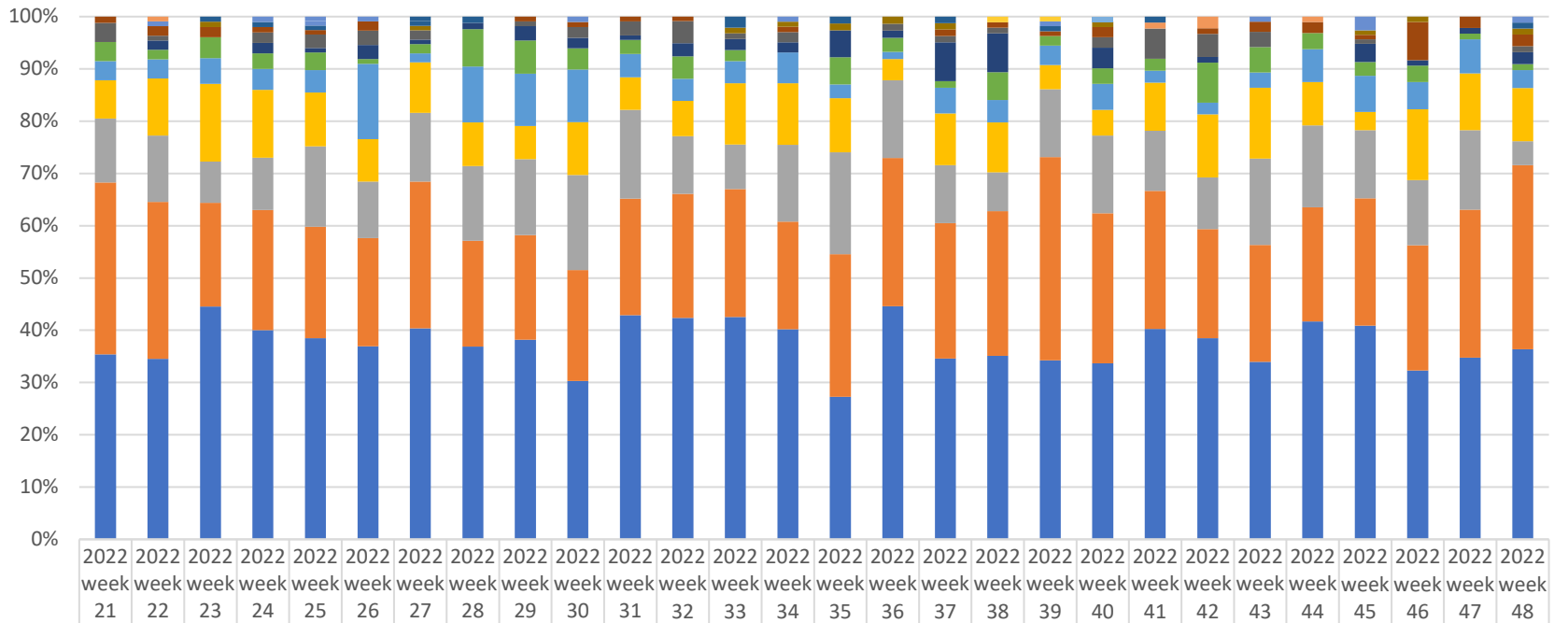
	23 Apr-05	07 May	14 May	21 May	28 May	04 Jun	11 Jun	18 Jun	25 Jun	02 Jul	09 Jul	16 Jul	19 Aug	02 Sep	16 Sep	30 Sep	14 Oct	28 Oct	11 Nov	25 Nov	09 Dec	23 Dec	06 Jan	20 Jan	03 Feb	17 Feb	03 Mar	17 Mar	31 Mar	14 Apr	28 Apr	12 May	26 May	09 Jun	23 Jun	07 Jul	21 Jul	04 Aug	18 Aug	31 Aug	14 Sep	28 Sep	11 Oct	25 Oct	08 Nov	22 Nov	05 Dec															
% with Symptoms of Depressive Disorder low conf. level	20%	19%	20%	19%	23%	18%	20%	23%	27%	25%	24%	28%	21%	12%	3%	2%	3%	2%	6%	2%	1%	2%	4%	6%	2%	9%	7%	0%	2%	6%	2%	5%	2%	3%	2%	1%	9%	2%	0%	1%	9%	2%	1%	2%	0%	2%	1%	9%	2%	0%	1%	9%										
% with Symptoms of Depressive Disorder value	22%	23%	23%	22%	27%	12%	23%	6%	1%	2%	8%	7%	2%	4%	2%	3%	2%	6%	2%	8%	2%	4%	2%	8%	1%	3%	3%	4%	3%	7%	3%	2%	1%	0%	6%	2%	6%	2%	3%	2%	2%	3%	2%	2%	2%	2%	2%	2%	2%	2%	2%	2%	1%	2%								
% with Symptoms of Depressive Disorder high conf. level	25%	27%	27%	26%	31%	25%	26%	30%	5%	1%	3%	7%	2%	6%	2%	5%	2%	8%	2%	1%	2%	8%	1%	3%	3%	4%	3%	7%	3%	2%	1%	0%	6%	2%	6%	2%	3%	2%	2%	3%	2%	2%	2%	2%	2%	2%	2%	2%	2%	2%	2%	2%	2%	2%	2%	2%						
% with Symptoms of Anxiety Disorder low conf. level	28%	25%	26%	24%	28%	26%	25%	27%	3%	3%	5%	2%	2%	0%	2%	9%	2%	1%	3%	2%	3%	2%	3%	4%	4%	5%	8%	3%	1%	2%	9%	2%	2%	5%	2%	4%	2%	2%	1%	2%	7%	2%	5%	2%	6%	2%	5%	2%	2%	2%	2%	2%	2%	2%	2%	2%	2%	2%	2%			
% with Symptoms of Anxiety Disorder value	31%	29%	29%	27%	32%	29%	29%	1%	7%	8%	6%	7%	3%	1%	5%	5%	6%	5%	6%	8%	7%	8%	1%	6%	4%	3%	3%	0%	2%	5%	2%	8%	2%	7%	2%	8%	2%	5%	2%	4%	0%	2%	8%	2%	9%	2%	9%	1%	2%	5%	0%	2%	6%	1%	2%	9%						
% with Symptoms of Anxiety Disorder high conf. level	34%	33%	28%	0%	6%	3%	3%	4%	4%	1%	4%	1%	0%	4%	2%	5%	3%	7%	8%	9%	8%	9%	4%	1%	4%	0%	8%	6%	3%	2%	8%	2%	3%	0%	1%	2%	7%	7%	3%	1%	3%	3%	4%	2%	3%	1%	0%	3%	4%	2%	3%	1%	0%	3%	2%	9%	2%	9%	5%	5%	1%	
% with Symptoms of Anxiety or Depressive Disorder low conf. level	32%	1%	0%	2%	9%	3%	2%	9%	0%	1%	8%	9%	6%	8%	9%	5%	3%	7%	5%	8%	9%	8%	9%	4%	0%	4%	1%	4%	3%	7%	7%	4%	3%	2%	0%	2%	9%	2%	6%	2%	5%	2%	2%	8%	0%	0%	3%	0%	1%	2%	9%	0%	1%	2%	6%	2%	8%	2%	3%	1%		
% with Symptoms of Anxiety or Depressive Disorder value	35%	5%	3%	3%	2%	7%	2%	4%	5%	4%	2%	4%	7%	5%	4%	0%	8%	4%	2%	9%	4%	3%	4%	2%	4%	6%	1%	4%	0%	7%	6%	0%	3%	1%	2%	2%	9%	2%	6%	2%	5%	1%	3%	4%	4%	6%	3%	2%	3%	4%	3%	2%	3%	4%	3%	1%	2%	9%	1%	6%	7%	3%
% with Symptoms of Anxiety or Depressive Disorder high conf. level	38%	9%	6%	5%	4%	5%	8%	8%	6%	4%	5%	4%	9%	4%	8%	3%	4%	2%	5%	4%	2%	4%	7%	4%	6%	7%	0%	5%	3%	1%	9%	3%	3%	6%	4%	6%	2%	1%	8%	4%	7%	8%	4%	7%	8%	4%	7%	6%	6%	5%	7%	1%	7%	3%	4%	2%	4%	9%	1%	6%		

### Place of Service -Crisis Services, percent of total by week



	2022 week 21	2022 week 22	2022 week 23	2022 week 24	2022 week 25	2022 week 26	2022 week 27	2022 week 28	2022 week 29	2022 week 30	2022 week 31	2022 week 32	2022 week 33	2022 week 34	2022 week 35	2022 week 36	2022 week 37	2022 week 38	2022 week 39	2022 week 40	2022 week 41	2022 week 42	2022 week 43	2022 week 44	2022 week 45	2022 week 46	2022 week 47	2022 week 48
Community Mental Health Center		1																								1		1
Custodial Care Facility		1								1	1							1		1								
Skilled Nursing Facility					2		1				1	1																
On Campus Outpatient Hospital					2						1				1			1	1				1			1		
Nursing Facility				1	2						1	1		1			1				2	1		1				
Psych. Residential			2		1		2				1		1	3	1	1					1					1	1	1
Group Home	1	4	1			1					2	3			1	1		1	1	2	1	1	2		1	3	3	4
Homeless Shelter	4	1		1	1	2	1		3	3	4	1	1	7	3	2	2	1		3				3	1			
School	5	13	3	4	4								1			1	2	5	2	6	3	7	5	2	4	1	3	
Inpatient Hospital	4	3	3	3	4	12	1	11	11	6	4	6	4	5	8	1	3	7	5	8	4	2	7	7	9	5	3	3
Inpatient Psychiatric Facility	4	10	7	12	5	8	8	4	6	6	7	5	10	9	3	4	7	8	3	2	6	8	10	7	3	10	7	8
Prison Correctional Facility	9	13	4	9	16	12	13	10	9	14	12	13	10	16	15	10	12	8	13	13	8	7	16	14	16	8	15	4
Telehealth	18	19	16	17	21	21	14	11	17	10	11	14	19	15	12	7	7	6	9	6	11	7	14	4	2	10	6	8
Assisted Living Facility	17	15	8	14	21	13	13	6	14	6	7	23	24	26	28	27	32	16	16	23	30	22	35	14	14	23	13	14
Emergency Room Hospital	24	30	38	27	52	37	25	27	31	32	41	34	34	45	21	33	32	26	34	29	25	34	32	37	42	26	22	24
Home	22	70	48	53	78	63	63	68	55	32	32	35	43	36	33	45	29	30	35	26	40	55	43	35	54	40	40	35
Other Place of Service	101	123	125	140	109	114	115	82	112	97	94	110	107	106	89	117	95	118	93	119	106	104	99	94	120	99	103	95
Office	112	113	123	123	121	125	127	129	132	120	158	176	110	97	112	92	100	169	115	168	127	123	151	125	148	134	123	104

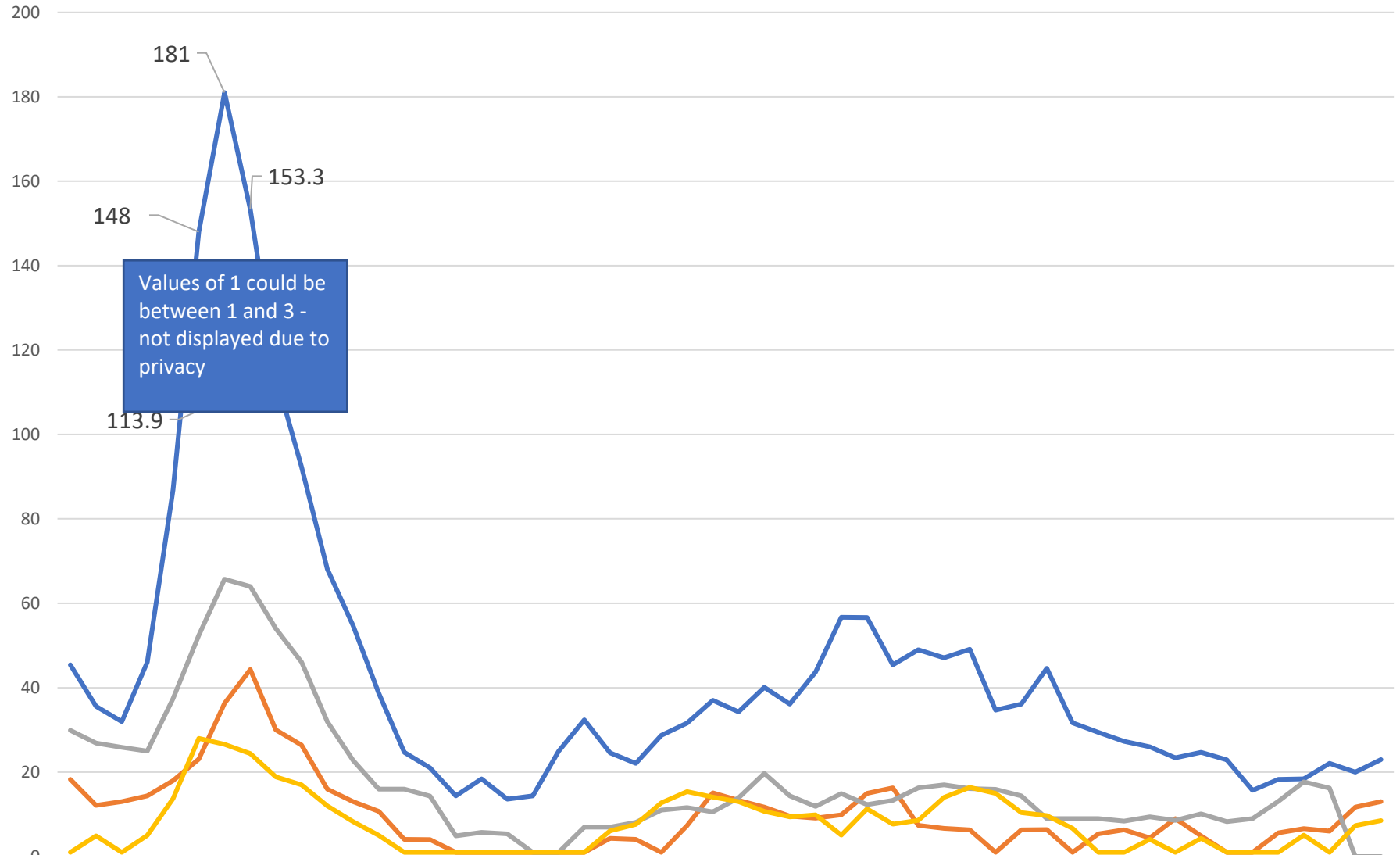
### Place of Service -Investigations, percent of total by week



	2022 week 21	2022 week 22	2022 week 23	2022 week 24	2022 week 25	2022 week 26	2022 week 27	2022 week 28	2022 week 29	2022 week 30	2022 week 31	2022 week 32	2022 week 33	2022 week 34	2022 week 35	2022 week 36	2022 week 37	2022 week 38	2022 week 39	2022 week 40	2022 week 41	2022 week 42	2022 week 43	2022 week 44	2022 week 45	2022 week 46	2022 week 47	2022 week 48	
Custodial Care Facility																													
On Campus Outpatient Hospital																			1	1									
Skilled Nursing Facility			1				1														1								
School		1																			1	2		1					
Homeless Shelter				1	1								1							1				1					
Community Mental Health Center		1			1	1				1																3		1	
Telehealth				1	1		1	1					2		1		1		1									1	
Psych. Residential			1				1						1	1	1	1	1			1					1	1		1	
Group Home	1	2	2	1	1	2			1	1	1	1		1			1	1	1	2		1	2	2	2	1	7	2	2
Assisted Living Facility	3	1		2	3	3	2		1	2	3	5	1	2		1	1	1		2	5	4	3		1			1	
Home		2		2	1	3	1	1	3	2	1	3	2	2	4	1	6	7		4		1			4	1	1	2	
Office	3	2	4	3	4	1	2	6	7	4	3	5	2		4	2	1	5	2	3	2	7	5	3	3	3	1	1	
Inpatient Hospital	3	4	5	4	5	16	2	9	11	10	5	5	4	6	2	1	4	4	4	5	2	2	3	6	8	5	6	3	
Inpatient Psychiatric Facility	6	12	15	13	12	9	11	7	7	10	7	8	11	12	8	3	8	9	5	5	8	11	14	8	4	13	10	9	
Prison Correctional Facility	10	14	8	10	18	12	15	12	16	18	19	13	8	15	15	11	9	7	14	15	10	9	17	15	15	12	14	4	
Other Place of Service	27	33	20	23	25	23	32	17	22	21	25	28	23	21	21	21	21	26	42	29	23	19	23	21	28	23	26	31	
Emergency Room Hospital	29	38	45	40	45	41	46	31	42	30	48	50	40	41	21	33	28	33	37	34	35	35	35	40	47	31	32	32	



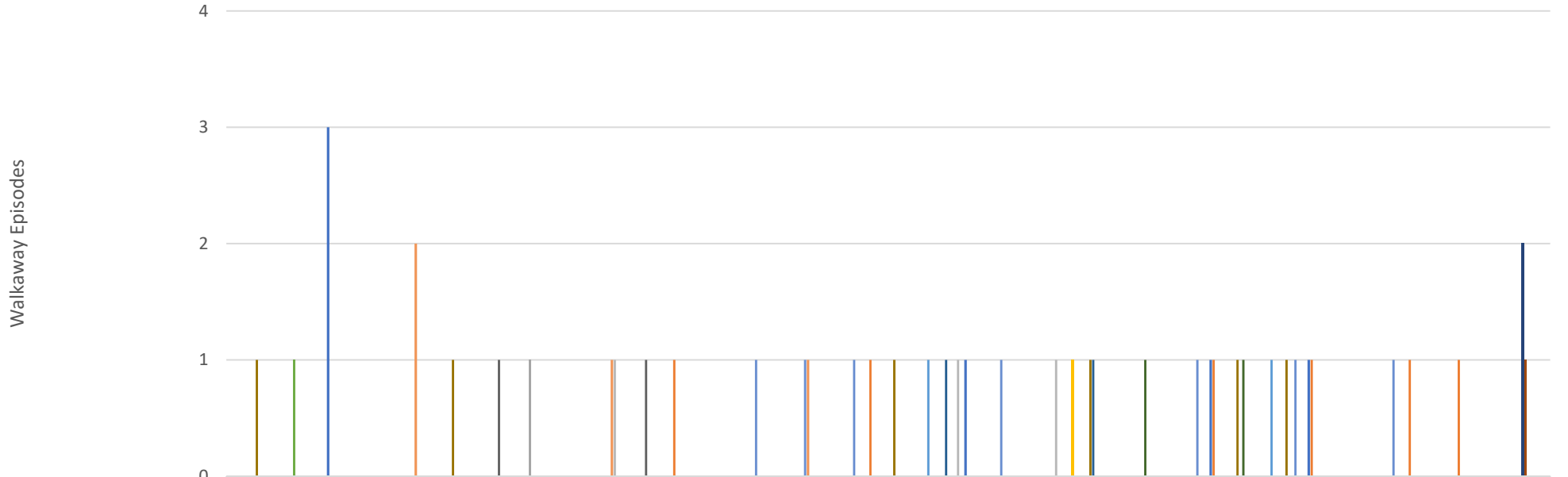
### Total Hospitalized Adults - COVID-19 (confirmed or suspected) 7 day average



Values of 1 could be between 1 and 3 - not displayed due to privacy

	12/3/21	12/10/21	12/17/21	12/24/21	12/31/21	1/7/22	1/14/22	1/21/22	1/28/22	2/4/22	2/11/22	2/18/22	2/25/22	3/4/22	3/11/22	3/18/22	3/25/22	4/1/22	4/8/22	4/15/22	4/22/22	4/29/22	5/6/22	5/13/22	5/20/22	5/27/22	6/3/22	6/10/22	6/17/22	6/24/22	7/1/22	7/8/22	7/15/22	7/22/22	7/29/22	8/5/22	8/12/22	8/19/22	8/26/22	9/2/22	9/9/22	9/16/22	9/23/22	9/30/22	10/7/22	10/14/22	10/21/22	10/28/22	11/4/22	11/11/22	11/18/22	11/25/22
Prov. Everett	45	36	32	46	87	148	181	153.3	114	92	68	55	39	25	21	14	18	14	14	25	32	25	22	29	32	37	34	40	36	44	57	57	45	49	47	49	35	36	45	32	29	27	26	23	25	23	16	18	18	22	20	23
SVH	18	12	13	14	18	23	36	44	30	26	16	13	11	4.1	4	1	1	1	1	1	1	4.3	4.1	1	7.3	15	13	12	9.6	9.1	9.9	15	16	7.4	6.7	6.3	1	6.3	6.4	1	5.4	6.3	4.4	9	4.9	1	1	5.6	6.6	6	12	13
ST Joe	30	27	26	25	37	52	66	64	54	46	32	23	16	16	14	4.9	5.7	5.4	1	1	7	7	8.1	11	12	11	14	20	14	12	15	12	13	16	17	16	16	14	9	9	9	8.4	9.4	8.6	10	8.3	9	13	18	16	0	0
Swedish Edmonds	1	4.9	1	5	14	28	27	24	19	17	12	8.3	5	1	1	1	1	1	1	1	1	6.1	7.6	13	15	14	13	11	9.4	9.9	5.1	11	7.7	8.6	14	16	15	10	9.7	6.7	1	1	4.1	1	4.3	1	1	1	5.1	1	7.3	8.5

### North Sound BH ASO Walkaway Chart 05/15/22 to 11/26/22



	2022 Week 01	2022 Week 02	2022 Week 03	2022 Week 04	2022 Week 09	2022 Week 11	2022 Week 12	2022 Week 13	2022 Week 15	2022 Week 16	2022 Week 17	2022 Week 18	2022 Week 19	2022 Week 22	2022 Week 24	2022 Week 25	2022 Week 26	2022 Week 27	2022 Week 28	2022 Week 30	2022 Week 32	2022 Week 33	2022 Week 37	2022 Week 39	2022 Week 40	2022 Week 41	2022 Week 43
Cascade Valley Hospital			3													1					1		1				
Island Hospital				2						1				1								1		1		1	1
Olympic Medical Center							1																				
Peace Island Health																			1								
Providence															1								1				
Providence - Colby		1																									
Providence, Everett																											2
San Juan Co Jail																											1
Skagit Valley						1			1																		
St. Joseph	1				1									1							1		1				
Swedish Edmonds															1						1						
Swedish Mill Creek																				1		1					
United General											1	1	1			1					1		1		1		
Whidbey Health								1				1															
Whidbey Health ED								1							1		1										